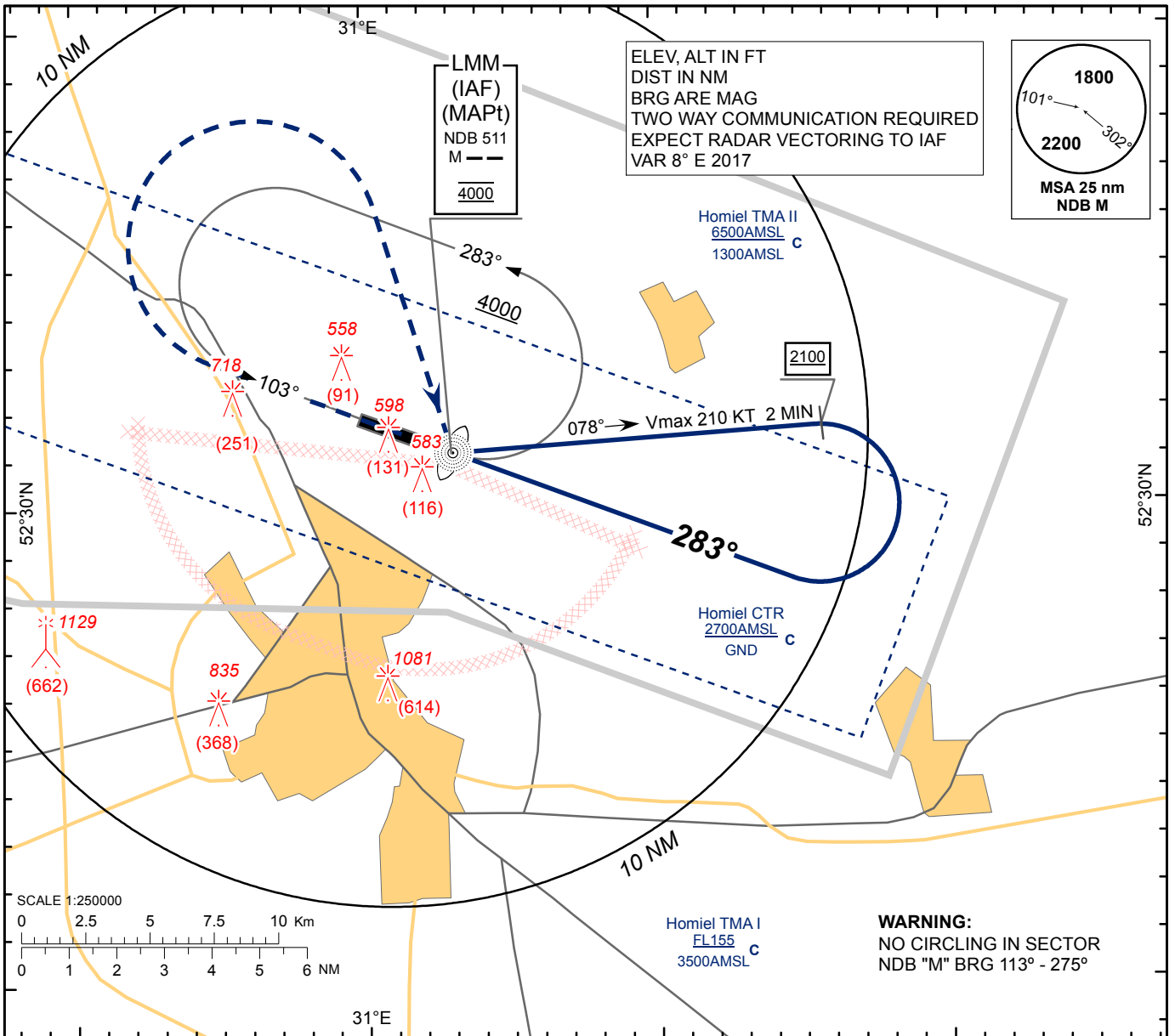


**INSTRUMENT
APPROACH
CHART - ICAO**

AERODROME ELEV 471
HEIGHTS RELATED TO
THR RWY 28 - ELEV THR 467

APP 126.100
TWR 118.100
MET 119.550 (EN)
124.475 (RUS)

**HOMIEL
NDB
RWY 28**

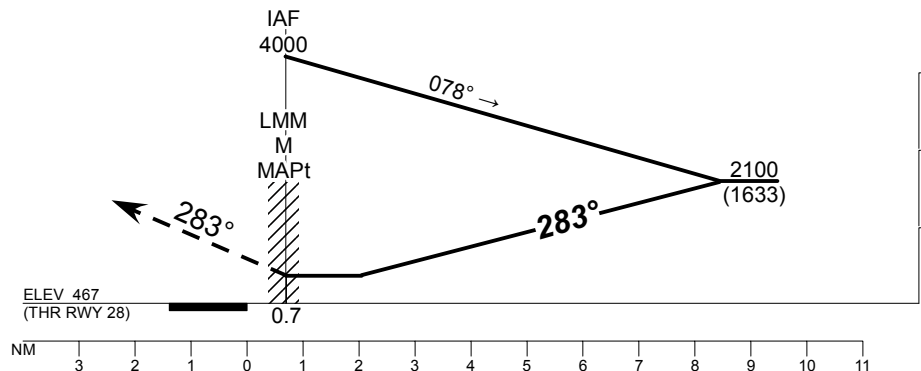


TRANSITION ALTITUDE: 6000

Alt set: hPa (mm on req)
QNH (QFE on req)

MISSED APPROACH

Climb on track 283°
to 1500 (1033) or above
turn RIGHT to (IAF) LMM "M"
climbing to 2100 (1633)
and follow ATC instructions.



CHANGE: New chart.

Aircraft Category		A	B	C	D
Straight-in Approach OCA(H)	NDB M no FAF	830 (360)			
Circle - to - land		860 (390)	860 (390)	1120 (650)	1120 (650)

HOMIEL
NDB
RWY 28

AERONAUTICAL DATA TABULATION

NDB approach to RWY28 from M LMM	
Fix/point	Coordinates
(IAF, MAPt) M LMM	523108.7N 0310303.7E
(TP) M BRG 078° V 210KT 2 MIN	523138N 0311531E
THR RWY 28	523122.59N 0310203.83E